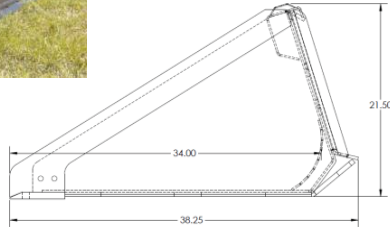


Heavy Duty Low Profile Bucket

60" Model #33037, 68" Model #33053
 72" Model #33013, 78" Model #33042
 80" Model #33023, 84" Model #33024

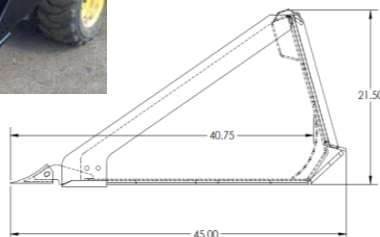


- Low profile for better visibility of the cutting edge
- Reinforced bucket liner for longer life and less buckling
- Holes in cutting edge for optional 5/8" x 8 bolt on cutting edge (6" bolt spacing)

Specifications	
Overall Width	60", 68", 72", 78", 80" & 84"
Overall Height	21½"
Overall Depth	38¾"
Bucket Thickness	3/16"
Side Plates	3/16"
Step Bent Insert	3/16"
Side Cutting Edge	3/8" Grade 50
Wear Bars	3/8" Grade 50
Mounting Plate	5/16" HR Steel
Cutting Edge	3/4" x 6"
Step	Extruded Grips
Struck Capacity cu. ft.	(60" 13.2) (68" 15) (72" 15.9) (78" 17.5) (80" 17.75) (84" 18.5)
Heaped Capacity cu. ft.	(60" 15.8) (68" 18) (72" 19) (78" 20.5) (80" 20.12) (84" 22.25)
Weights (Lbs.)	(60" 485) (68" 525) (72" 530) (78" 575) (80" 610) (84" 630)

Tooth Bucket

60" Model #33037T, 68" Model #33053T,
 72" Model #33013T, 78" 33042T,
 80" Model #33023T, 84" Model #33024T



- Excellent cutting edge visibility
- Loosen hard pack dirt
- High break out force
- Versatile bucket for tough digging and material handling

Specifications	
Overall Width	60", 68", 72", 78", 80", 84"
Overall Height	21½"
Overall Depth	45"
Bucket Thickness	3/16"
Side Plates	3/16"
Step Bent Insert	3/16"
Side Cutting Edge	3/8" Grade 50
Wear Bars	3/8" Grade 50
Mounting Plate	5/16" HR Steel
Cutting Edge	3/4" x 6"
Step	Extruded Grips
Struck Capacity (cu. ft.)	(60" - 13.2) (68" - 15) (72" - 15.9) (78" - 17.5) (80" - 17.75) (84" - 18.5)
Heaped Capacity (cu. ft.)	(60" - 15.8) (68" - 18) (72" - 19) (78" - 20.5) (80" - 20.12) (84" - 22.25)
Weights (Lbs.)	(60" - 565) (68" - 605) (72" - 620) (78" - 665) (80" - 705) (84" - 730)

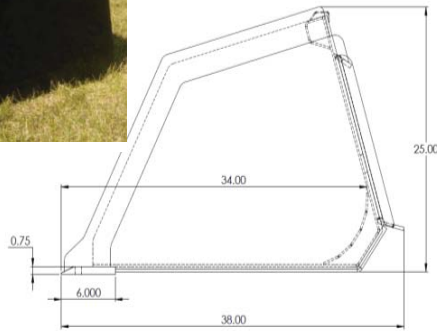
BUCKETS

Utility Buckets

66" Model #33012


72" Model #33184


84" Model #33185




Specifications

Overall Width	66", 72", 84"
Overall Height	25"
Overall Depth	38.5"
Bucket Thickness	3/16"
Side Plates	3/16"
Step Bent Insert	3/16"
Side Cutting Edge	3/8" Grade 50
Wear Bars	3/8" Grade 50
Mounting Plate	5/16" HR Steel
Cutting Edge	3/4" x 6"
Step	Extruded Grips
Struck Capacity cu. ft.	(66" 20.5) (72" 21.9) (84" 25)
Heaped Capacity cu. ft.	(66" 24.6) (72" 26.2) (84" 30)
Weights (Lbs.)	(66" 576) (72" 630) (84" 735)

 Inside of bucket is fully welded for added strength

 Excellent for general purpose use

 Option to add bolt-on cutting edge

LEGEND ATTACHMENTS

Our Quality Is “LEGEND”ARY

Skid Steer Low Profile & Utility Buckets

ORDER #	Description	Weight	LIST
LA 33348	48” Heavy Duty Low profile Bucket USSM	447	1470.00
LA 33037	60” Heavy Duty Low profile Bucket USSM	485	1621.00
LA 33053	68” Heavy Duty Low Profile Bucket USSM	530	1741.00
LA 33013	72” Heavy Duty Low Profile Bucket USSM	525	1768.35
LA 33042	78” Heavy Duty Low Profile Bucket USSM	575	1927.00
LA 33023	80” Heavy Duty Low Profile Bucket USSM	610	2022.00
LA 33024	84” Heavy Duty Low Profile Bucket USSM	630	2137.00
LA 33348T	60” Heavy Duty Low Profile “Tooth” Bucket USSM	479	1786.00
LA 33037T	48” Heavy Duty Low Profile “Tooth” Bucket USSM	565	2042.00
LA 33053T	68” Heavy Duty Low Profile “Tooth” bucket USSM	605	2187.00
LA 33013T	72” Heavy Duty Low Profile “Tooth” Bucket USSM	620	2252.00
LA 33042T	78” Heavy Duty Low Profile “Tooth” Bucket USSM	665	2362.00
LA 33023T	80” Heavy Duty Low Profile “Tooth” Bucket USSM	705	2464.00
LA 33024T	84” Heavy Duty Low Profile “Tooth” Bucket USSM	730	2544.00
LA 33012	66” Utility Dirt Bucket	576	1972.00
LA 33184	72” Utility Dirt Bucket	630	2094.00
LA 33332	78” Utility Dirt Bucket	682	2214.00
LA 33185	84” Utility Dirt Bucket	735	2450.00
LA 33316	54” Std Duty Manure Bucket	498	1727.00
LA 33278	66” Std Duty Manure Bucket	522	2065.00
LA 33247	72” Std Duty Manure Bucket	541	2180.00
LA 33279	78” Std Duty Manure Bucket	582	2370.00
LA 33248	75” Sifter Bucket	876	2802.00



(Low Pro “Tooth” Bucket)



(Low Pro Bucket)